

PARTS CATALOG

T8.275 / T8.300 / T8.330 / T8.360 / T8.390
Tractor
Tier IV

Print No. 84312165
10/2012



NEW HOLLAND

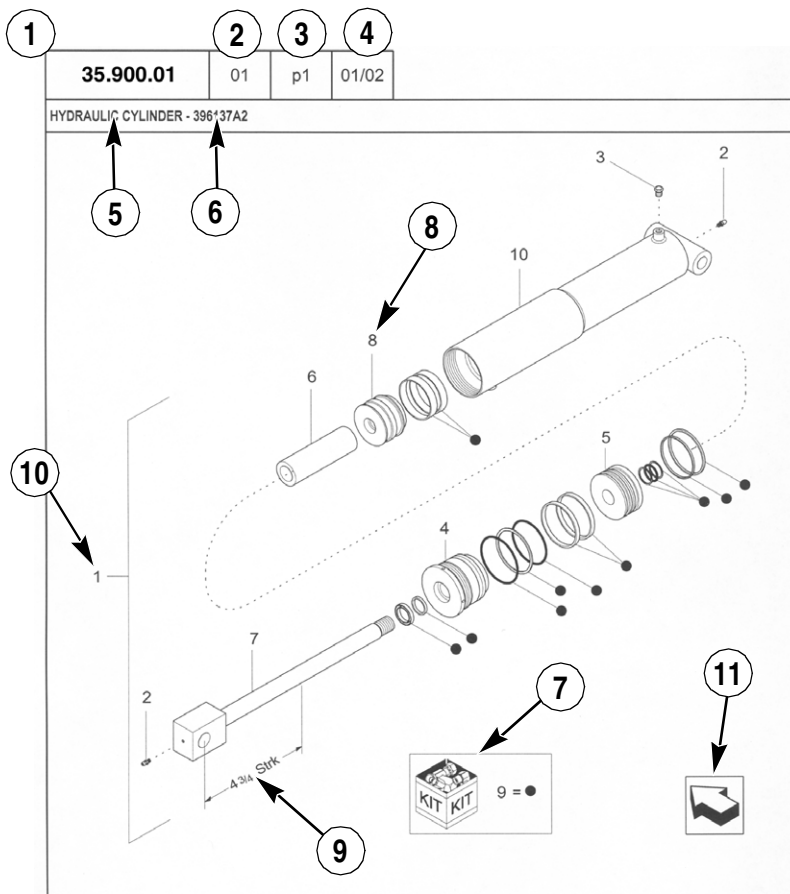
AGRICULTURE

GENERAL INFORMATION

1. Whenever the terms left and right are used, it should be understood to mean from a position facing in direction of travel.
2. Throughout this manual you may find common hardware not illustrated, but listed in the description column. The service part immediately preceding a hardware listing is the part using these particular items for mounting purposes. This hardware is not included with the service part or assembly when ordered as a replacement.
3. The illustrations show typical assemblies plus individual parts but in all cases may not show the exact shape or detail of parts required. However, the purpose for the illustrations is to identify parts performing like functions. Whenever possible illustrations are located at the beginning of each section or immediately adjacent to the applicable text.
4. CNH America LLC is continually striving to improve its products. We must, therefore, reserve the right to make improvements or changes when it becomes practical and possible to do so, without incurring any obligation to make changes or additions to the equipment sold previously.

CNH America LLC, Racine, WI 53404 U.S.A.

How to Use Your Parts Catalog



HYDRAULIC CYLINDER - 396137A2					
REF	FN	PART NUMBER	YR/SN	QTY	DESCRIPTION
1	1	396137A2	BTW 01/85 & 02/02	1	CYLINDER ASSY. 4-3/4 in strk, Inc 2-10
2		31-95	Before 01/85	2	FITTING
2		219-8	From 01/85	2	NIPPLE, LUBE Grease, 1/4 tpr x 17/32
3		{402475A2}		1	BREATHER
4		402474A1		1	CAP CYLINDER END
5		402468A1	BSN JJC0189200	1	PISTON ROD/GLAND
5		145221C3	ASN JJC0189200	1	PISTON
6		402471A1		1	SPACER
7		402473A1		1	ROD, PISTON
8		402469A1		1	PISTON ROD/GLAND
9		402476A1		1	PACKAGE, SEALS
10		NSS		1	NOT SERVICED SEPARAT CASE ASSEMBLY
(1) 08-20					
STANDARD			MODELS		

How to Use Your Parts Catalog

1. Figure Number
2. Sequence code within the Figure Number
3. Page number within the Sequence Code
4. Date of Printing (month / year)
5. Figure Description
6. General information regarding the figure
7. Parts supplied in repair kits per symbol reference
8. Figure call-out of the part number (REF)
9. Technical Specifications relating to the part indicated
10. Figure call-out includes bracketed items, the included items may also be listed in the additional description area
11. Orientation - Arrow indicates front of the machine
12. Footnote - Additional information relating to the part number. In this example, 08-20 equals another figure that this part is shown on.
13. Part Number
 - NSS = Non-serviced parts
 - Bracketed numbers = not available as service parts in this market
14. Not Available as service part in this market
15. YR/SN
 - Year
 - Before 01/85 = Part valid for production January 1985 and before
 - From 01/85 = Part valid for production from January 1985 and after
 - BTW 01/85 & 02/02 = Part valid for machines produced between January 1985 and February 2002.
 - Serial Number (P.I.N.)
 - BSN JJC0268800 = Part valid for serial number JJC0268800 and below
 - ASN JJC0268800 = Part valid for serial number JJC0268800 and above
 - BTW JJC0178000 & JJC0179000 = Part valid for serial numbers between JJC0178000 & JJC0179000
16. Total Quantity of the Part referred to in the page. The quantity can be replaced by the following indications:
 - AR = quantity as required
 - X = as required
17. Part Description
18. Additional description of the part to help confirm identification
19. Figure Notes
20. Model Number(s)

Explanation of Abbreviations

Abbreviation	Meaning
adj	adjustable
amp	ampere
AR	As required
ASN	Serial number and after / P.I.N. and after
barb	barb
blkhd	bulkhead
boss	boss
BSN	before serial number / before P.I.N
BTW	between
cc	cubic centimetre
chain	chain
cl	class
cp pt	cup point
CRS	Chrome Alloy Steel
CST	Carbon Steel
cu yd	cubic yard
deg	degree
dia	diameter
dr type	drive type
dry	dry
fc	face
fc sl	face seal
fem	female
fem PT	female pipe thread
fl	flare
ft	feet (or foot)
gal	gallon(s)
gr	grade
hd	head
hp	horsepower
ID	inside diameter

Abbreviation	Meaning
in	inch(es)
Inc.	includes
inv fl	inverted flare
K	kilo
kg	kilogram
L	litre
lb	pound(s)
lg	long
LH	left hand
LH thd	left hand thread
links	links
M	(prefix) metric thread size
m	metre
male	male
mm	millimetre
NF	National Fine
No.	number
NS	National Super Fine
OD	outside diameter
ohm	electrical unit of resistance
Or	O-ring
orifice	orifice
P	pitch
piece	piece
psi	pounds per square inch
PT	pipe thread
rd	round
rd holes	round holes
RH	right hand
RH thd	right hand thread
rpm	revolutions per minute

Explanation of Abbreviations

Abbreviation	Meaning
sl	self locking
slat	slat
spool	spool
sq	square
SST	Stainless Steel
st	self tapping
stem	stem
strk	stroke
sw	swivel
T	teeth
Teflon	Teflon
thin	thin
thk	thick
tpr	taper

Abbreviation	Meaning
tube	tube
type	type
V	volt(s)
W	watt(s)
way	way
wide	wide
X	as required
yd	yard

Dimensions

Metric and U.S. hardware dimensions do not show the numeric designations of standard coarse threads. A number following a semi colon (;) is the class or grade of hardware. A comma (,) represents the decimal point (.) used in U.S. dimensions.



TABLE OF CONTENTS

00.000.00		PICTORIAL INDEX - MAINTENANCE
00.000.10	01	PICTORIAL INDEX - ENGINE (504376884)
00.000.10	02	PICTORIAL INDEX - ENGINE (504376884)
00.000.14		PICTORIAL INDEX - LIVE PTO
00.000.21		PICTORIAL INDEX - TRANSMISSION
00.000.23		PICTORIAL INDEX - 4WD LINES
00.000.25		PICTORIAL INDEX - FRONT MECHANICAL DRIVE
00.000.27		PICTORIAL INDEX - REAR DRIVE AXLE
00.000.31		PICTORIAL INDEX - IMPLEMENT POWER TAKE-OFF
00.000.33		PICTORIAL INDEX - BRAKES & CONTROLS
00.000.35		PICTORIAL INDEX - HYDRAULIC SYSTEMS
00.000.37		PICTORIAL INDEX - TOWING HOOKS & BALLASTING
00.000.39		PICTORIAL INDEX - FRAMES
00.000.41		PICTORIAL INDEX - STEERING
00.000.44		PICTORIAL INDEX - AXLE & WHEELS
00.000.50		PICTORIAL INDEX - CAB CLIMATE CONTROL
00.000.55		PICTORIAL INDEX - ELECTRICAL SYSTEMS
00.000.88		PICTORIAL INDEX - ACCESSORIES
00.000.90		PICTORIAL INDEX - PLATFORM, CAB, BODYWORK AND DECALS
00.100.01		INITIAL STOCKING LIST (ISL) FOR N.A. ONLY
05.100.01		FILTERS & CAPACITIES
10.001.01	01	ENGINE T4
10.001.01	02	ENGINE T2
10.001.02		CYLINDER BLOCK & RELATED PARTS (504292416 - 504311100 - 504248099)
10.012.02		ENGINE, MOUNTING
10.012.04		HOOKS - ENGINE (504363395)
10.101.01		CYLINDER HEAD & RELATED PARTS (5801378194 - 504029659 - 5801379857 - 504320756 - 504223088)
10.101.02		HEAD COVER
10.101.03		ENGINE BREATHERS (504334914)
10.102.01		OIL SUMP & RELATED PARTS (504332983)
10.102.02		FLYWHEEL CASE (504356968 - 504134507)
10.102.03		OIL LEVEL CHECK (504376868 - 504376865 - 5801411691 - 5801440482)
10.102.04		ENGINE OIL DRAIN
10.103.01		CRANKSHAFT & RELATED PARTS (504385236)
10.103.02		FLYWHEEL (504338269)
10.103.03		DAMPER, PST SHAFT & SHIELD - T8.360, T8.390
10.103.03		DAMPER, PST SHAFT & SHIELD - T8.275, T8.300, T8.330
10.103.04	01	DAMPER - PULLEY (504220573 - 504363515 - 504323018)
10.103.05		DAMPER, CVT SHAFT & SHIELD - T8.360, T8.390
10.103.05		DAMPER, CVT SHAFT & SHIELD, T8.275, T8.300, T8.330
10.105.01		PISTON - ENGINE
10.105.02		CONNECTING ROD
10.106.01		CAMSHAFT (504339814)
10.106.02		SHAFT & ROCKER ARMS (504189152 - 504312664)
10.106.05		PULLEY - CRANKSHAFT (504248440)
10.114.01		BELT PULLEY DRIVE & COVER (504150293)
10.120.01		ENGINE EXHAUST BRAKE (504329098)
10.202.01	01	AIR INTAKE
10.202.01	02	AIR INTAKE
10.202.02		DUCT, DIRTY AIR ASSEMBLY

TABLE OF CONTENTS

10.202.03		AIR CLEANER ASSEMBLY
10.206.01		FUEL FILTER & RELATED PARTS (504363526 - 504363525)
10.206.02		ENGINE OIL FILTER ASSY
10.206.03		FUEL SEPARATOR FILTER
10.206.04		FUEL LINES WITH SEPARATOR FILTER
10.206.05		FUEL FILTER WITH WIF SENSOR
10.214.01		FUEL PUMP/FILTER PLUMBING
10.216.01		FUEL TANK & ASSOCIATED PARTS POWERSHIFT TRANSMISSION, T4
10.216.02		FUEL TANKS & MOUNTING, T2 WITH POWERSHIFT TRANSMISSION
10.216.03	01	FUEL TANK SUPPORTS WITH POWERSHIFT TRANSMISSION
10.216.03	02	FUEL TANK SUPPORTS WITH PST
10.216.04		FUEL TANK SUPPORTS WITH CVT
10.216.05		FUEL TANKS & MOUNTING T4 WITH CVT
10.216.06		FUEL TANKS & MOUNTING, T2 WITH CVT
10.218.02		FUEL INJECTORS (504319990)
10.218.03		FUEL LINES & RELATED PARTS (504305623)
10.218.04		FUEL LINES & RELATED PARTS (504363514)
10.220.01		FOOT THROTTLE
10.220.02		EXHAUST BRAKE PEDAL & SWITCH
10.247.01		INJECTION PUMP (504305623)
10.247.01	01	INJECTION PUMP
10.250.02		TURBOCHARGER & RELATED PARTS (504382715)
10.254.01		AIR LINES (504236499)
10.254.02		ENGINE BLOCK & TRANSMISSION HEATERS
10.254.03	01	EXHAUST SYSTEM T4
10.254.03	02	EXHAUST SYSTEM, T4
10.254.03	03	EXHAUST SYSTEM, T2
10.254.04		AIR INLET HEATER (504329100)
10.254.05		EXHAUST MANIFOLD (504380218)
10.254.06	01	SCR TANK ASSEMBLY
10.254.06	02	SCR HOSE ASSEMBLY & COMPONENTS
10.254.07		GRID HEATER CABLES
10.304.01		PUMP, ENGINE OIL & RELATED PARTS (504133121)
10.304.03	01	OIL PUMP PIPING (504332973)
10.304.03	02	OIL PUMP PIPING (5801372649)
10.304.03	03	OIL PUMP PIPING (504385686)
10.304.05		OIL PRESSURE REGULATION VALVE (504191874)
10.310.01		AFTERCOOLER
10.402.01	01	WATER PUMP PIPES, ENGINE WITH BRAKE (504382682 - 504322623 - 504387190 - 5801422773)
10.402.01	02	WATER PUMP PIPES, ENGINE WITHOUT BRAKE (504382682 - 504322623 - 504387190 - 504153553)
10.402.01	03	PIPING - ENGINE COOLING SYSTEM (504032238 - 504032236 - 504088291 - 504051325)
10.402.01	04	TEMPERATURE CONTROL (THERMOSTAT) - (504292843 - 504072032)
10.402.02		WATER PUMP & RELATED PARTS (504361542)
10.406.01	01	RADIATOR & FAN SHROUD - 4-ROW
10.406.01	02	RADIATOR & FAN SHROUD - 4-ROW
10.406.02	01	RADIATOR ASSEMBLY - 5-ROW
10.406.02	02	RADIATOR MOUNTING AND PLUMBING - 5-ROW
10.406.02	03	RADIATOR MOUNTING AND PLUMBING - 5-ROW

TABLE OF CONTENTS

10.408.01		HEAT EXCHANGER (504339248)
10.414.01		VISCOUS FAN DRIVE, ELECTRONIC
10.414.02		SUPPORT ASSY, VISCOUS FAN DRIVE
14.102.04		POWER TAKE OFF ASSEMBLY, INPUT SHAFT
14.102.05		POWER TAKE OFF ASSEMBLY, REDUCTION GEAR, DUAL SPEED
14.102.06		POWER TAKE OFF ASSEMBLY, OUTPUT SHAFT, DUAL SPEED
14.102.07		POWER TAKE OFF ASSEMBLY, OUTPUT SHAFT, SINGLE SPEED
21.105.01	01	TRANSMISSION HYDRAULIC LUBE LINES - POWERSHIFT
21.105.01	02	TRANSMISSION HYDRAULIC LUBE LINES - POWERSHIFT
21.114.01		SPEED TRANSMISSION, HOUSING
21.135.01		TRANSMISSION CONTROL ASSEMBLY
21.135.04		VALVE ASSEMBLY, INCHING
21.135.05		TRANSMISSION CONTROL VALVE LOCATION
21.135.06		VALVE ASSEMBLY, TRANSMISSION CONTROL (450729A2)
21.135.07		VALVE ASSEMBLY, TRANSMISSION CONTROL (450724A2)
21.135.08		VALVE ASSEMBLY, TRANSMISSION CONTROL (450728A2)
21.135.09		VALVE ASSEMBLY, TRANSMISSION CONTROL (87323842)
21.140.11		SPEED TRANSMISSION, INPUT SHAFT WITHOUT CREEP OR 19 SPEED
21.140.12		SPEED TRANSMISSION, INPUT SHAFT WITH CREEP/19 SPEED OR 50 KPH TRANSMISSION
21.140.13		RANGE TRANSMISSION, INPUT SHAFT
21.154.01		SPEED TRANSMISSION, COUNTERSHAFT WITHOUT CREEP OR 19 SPEED
21.154.02		SPEED TRANSMISSION, COUNTERSHAFT WITH CREEP/19 SPEED OR 50 KPH TRANSMISSION
21.154.03		SPEED TRANSMISSION, OUTPUT SHAFT FRONT CLUTCH
21.154.04		SPEED TRANSMISSION, OUTPUT SHAFT REAR CLUTCH
21.154.05		RANGE TRANSMISSION, HOUSING
21.155.01	01	RANGE TRANSMISSION - MFD CLUTCH AND PARK BRAKE
21.155.01	02	RANGE TRANSMISSION - DANA CLASS V MFD CLUTCH AND PARK BRAKE
21.155.01	03	RANGE TRANSMISSION - DANA 12 BOLT MFD CLUTCH AND PARK BRAKE
21.155.01	04	RANGE TRANSMISSION - CLASS 4.5 MFD CLUTCH AND PARK BRAKE
21.155.03		RANGE TRANSMISSION, MASTER CLUTCH
21.155.30		RANGE TRANSMISSION, COUNTERSHAFT
21.155.31	01	TRANSMISSION DROP BOX
21.155.31	02	TRANSMISSION DROP BOX
23.101.01	01	FRONT AXLE DRIVESHAFT, MFD, WITHOUT DIFFERENTIAL LOCK-T8.275,T8.300, T8.330,T8.360
23.101.01	02	FRONT AXLE DRIVE SHAFT, MFD, WITH DIFFERENTIAL LOCK-T8.275,T8.300,T8.330, T8.360
23.101.02		FRONT AXLE DRIVE SHAFT, MFD, CLASS 4.5 AXLE-T8.275,T8.300
23.101.04		SHAFT ASSY, MFD 6C - PST & CVT
23.202.02	01	HYDRAULIC SYSTEM, 12 BOLT, SUSPENDED MFD AXLE-T8.275,T8.300,T8.330, T8.360
23.202.02	02	HYDRAULIC SYSTEM, 12 BOLT, SUSPENDED MFD AXLE-T8.275,T8.300,T8.330, T8.360
23.202.04	01	HYDRAULIC SYSTEM, CLASS V, SUSPENDED MFD AXLE-MAGNUM T8.330,T8.360, T8.390
23.202.04	02	HYDRAULIC SYSTEM, CLASS V, SUSPENDED MFD AXLE-MAGNUM T8.330,T8.360, T8.390
23.202.04	03	HYDRAULIC SYSTEM, CLASS V, SUSPENDED MFD AXLE-MAGNUM T8.330,T8.360, T8.390

TABLE OF CONTENTS

23.202.05		VALVE ASSEMBLY, SUSPENDED AXLE CONTROL
25.310.01	01	FRONT AXLE PLANETARIES AND HUB, MFD, 12 BOLT HUB-T8.275,T8.300,T8.330, T8.360
25.310.01	02	FRONT AXLE PLANETARIES AND HUB, MFD, 12 BOLT HUB-T8.275,T8.300,T8.330, T8.360
25.310.02		FRONT AXLE PLANETARIES AND HUB, CLASS 4.5, STANDARD MFD-T8.275,T8.300
25.100.01	02	MFD AXLE HOUSING ASSEMBLY, STANDARD 12 BOLT, WITH DIFFERENTIAL LOCK-T8.275,T8.300,T8.330,T8.360
25.100.02	01	FRONT AXLE ASSEMBLY, CLASS 4.5, STANDARD MFD-T8.275,T8.300
25.100.02	02	FRONT AXLE ASSEMBLY, CLASS 4.5, STANDARD MFD-T8.275,T8.300
25.100.03	01	FRONT AXLE ASSEMBLY, CLASS V, STANDARD AND SUSPENDED MFD-T8.330, T8.360,T8.390
25.100.03	02	FRONT AXLE ASSEMBLY, CLASS V, STANDARD AND SUSPENDED MFD-T8.330, T8.360,T8.390
25.100.03	03	FRONT AXLE DRIVE SHAFTS - CLASS V - STANDARD AND SUSPENDED MFD
25.100.04	01	MFD AXLE HOUSING ASSEMBLY, SUSPENDED WITH 12 BOLT HUB, WITH DIFFERENTIAL LOCK-T8.275,T8.300,T8.330,T8.360
25.100.04	02	MFD AXLE HOUSING ASSEMBLY, SUSPENDED WITH 12 BOLT HUB, WITH DIFFERENTIAL LOCK-T8.275,T8.300,T8.330,T8.360
25.100.05		FRONT AXLE, MOUNTING, MFD-T8.275,T8.300,T8.330,T8.360
25.100.06		FRONT AXLE, MOUNTING, SUSPENDED MFD-T8.275, T8.300, T8.330, T8.360
25.102.01	01	CARRIER & DIFFERENTIAL, MFD, 12 BOLT HUB, WITH DIFFERENTIAL LOCK-T8.275, T8.300,T8.330,T8.360
25.102.01	02	CARRIER & DIFFERENTIAL, MFD, 12 BOLT HUB, WITH DIFFERENTIAL LOCK-T8.275, T8.300,T8.330,T8.360
25.102.02	01	CARRIER & DIFFERENTIAL, CLASS 4.5, STANDARD MFD-T8.275, T8.300
25.102.02	02	CARRIER & DIFFERENTIAL, CLASS 4.5, STANDARD MFD-T8.275, T8.300
25.102.02	03	CARRIER & DIFFERENTIAL, CLASS 4.5, STANDARD MFD-T8.275, T8.300
25.102.03		CARRIER & DIFFERENTIAL, CLASS V, STANDARD AND SUSPENDED MFD-T8.330, T8.360,T8.390
25.108.02		FRONT AXLE KING PIN WITH AUTOGUIDANCE-T8.275,T8.300,T8.330,T8.360
25.122.01	01	FRONT AXLE, SUSPENSION, SUSPENDED MFD-T8.275,T8.300,T8.330,T8.360
25.122.01	02	FRONT AXLE, SUSPENSION, SUSPENDED MFD-T8.275,T8.300,T8.330,T8.360
25.122.03	01	FRONT AXLE, CLASS V, SUSPENDED MFD-T8.330,T8.360,T8.390
25.122.03	02	FRONT AXLE, SUSPENSION, CLASS V, SUSPENDED MFD-T8.330,T8.360,T8.390
25.122.03	03	CYLINDER ASSEMBLY, FRONT AXLE SUSPENSION
25.310.03		FRONT AXLE PLANETARIES AND HUB, CLASS V, STANDARD AND SUSPENDED MFD-T8.330,T8.360,T8.390
25.310.04		MFD AXLE, CLASS V, DRIVESHAFT WITH POWERSHIFT TRANSMISSION-T8.330, T8.360,T8.390
25.310.05		MFD AXLE, DRIVE SHAFT & SHIELD-T8.275,T8.300,T8.330,T8.360
27.100.01	01	REAR AXLE, HOUSING COVER
27.100.01	02	REAR AXLE, HOUSING
27.106.01		TRANSMISSION, DIFFERENTIAL
27.106.02		TRANSMISSION, PINION SHAFT & GEARS
27.120.01	01	REAR AXLE, 4 X 98 INCH, T8.275, T8.300, T8.330
27.120.01	02	REAR AXLE, 4.5 X 98 INCH, T8.330, T8.360, T8.390
27.120.01	03	REAR AXLE, 4 X 120 INCH, T8.275, T8.300, T8.330
27.120.01	04	REAR AXLE, 4.5 X 120 INCH, T8.300, T8.330, T8.360, T8.390
27.120.07		REAR AXLE, PLANETARY - T8.275, T8.300
27.120.08		REAR AXLE, PLANETARY - T8.330, T8.360

TABLE OF CONTENTS

27.120.09		REAR AXLE, PLANETARY - T8.390
27.179.01		TRANSMISSION, PUMP DRIVE
31.104.01		PTO, DIFFERENTIAL LOCK VALVE ASSEMBLY
31.146.01	01	FPTO ENGINE GEARBOX AND ARMS
31.146.01	02	ENGINE GEARBOX ASSY
31.146.02	01	FRONT PTO, FRONT HITCH HYDRAULICS
31.146.02	02	FRONT PTO & HITCH TRANSMISSION HYDRAULICS
31.146.03	01	FPTO 3PTH ASSEMBLY
31.146.03	02	HITCH, 3 POINT ASSY W/FPTO
31.146.03	03	FPTO GEARBOX ASSEMBLY INSTALLATION
31.146.03	04	FPTO GEARBOX ASSEMBLY
31.146.03	05	FPTO GEARBOX ASSEMBLY
31.146.04	01	FRONT HITCH, 3 POINT ASSEMBLY, 6T
31.146.04	02	FRONT HITCH, 3 POINT ASSEMBLY, 6T
31.146.04	03	FRONT HITCH, 3 POINT ASSEMBLY, 6T
31.146.04	04	FRONT HITCH, 3 POINT ASSEMBLY, 6T INSTALLATION
31.146.05		FPTO HYD HOOD SUPPORT
31.146.06		FRONT PTO, HEAT DEFLECTOR
31.146.07	01	FRONT PTO, OIL COOLER MOUNTING
31.146.07	02	OIL COOLER ASSY, FPTO
31.146.10		FRONT HITCH JUMPER
33.110.03		PARK BRAKE, RELEASE
33.110.04		PARK BRAKE, HYDRAULIC SYSTEM
33.202.01		BRAKES, PEDAL BRAKE
33.202.02		BRAKES, HYDRAULIC SYSTEM, WITHOUT TRAILER BRAKES
33.202.03		BRAKES, HYDRAULIC SYSTEM, WITH HYDRAULIC TRAILER BRAKES
33.202.04		BRAKES, HYDRAULIC SYSTEM, WITH PNEUMATIC BRAKES
33.202.05		BRAKES, CONTROL VALVE
33.202.06		BRAKE ASSY DIFFERENTIAL
33.224.01	01	TRAILER BRAKE PLUMBING
33.224.01	02	TRAILER BRAKES VALVE AND FILTER ASSY
33.224.01	03	PNEUMATIC TRAILER BRAKE CONTROL VALVE
33.224.01	04	TRAILER BRAKE RESERVOIRS, PST
33.224.02		AIR COMPRESSOR
33.224.03	01	TRAILER BRAKES, PNEUMATIC, COUPLERS, DUAL LINE
33.224.04		TRAILER BRAKES, PNEUMATIC, HAND CONTROL VALVE
33.224.05		TRAILER BRAKES, PNEUMATIC, RESERVOIR, MU8.1
33.224.06		HYDRAULIC TRAILER BRAKE
35.100.01		HITCH LIFT LINK/TURNBUCKLE PLUMBING
35.100.03	01	HITCH LIFT CYLINDER PLUMBING 95MM
35.100.03	02	HITCH LIFT CYLINDER PLUMBING 105MM
35.100.03	03	HITCH LIFT CYLINDER PLUMBING 115MM
35.105.01		HYDRAULIC SYSTEM, CHARGE PUMP
35.116.01	01	CYLINDER ASSEMBLY, HITCH (95 MM)
35.116.01	02	CYLINDER ASSEMBLY, HITCH (105 MM)
35.116.01	03	CYLINDER ASSEMBLY, HITCH (115 MM)
35.120.03	01	HITCH, LOWER LIFT LINKS
35.120.03	02	HITCH, LOWER LIFT LINKS, CATEGORY III
35.120.03	03	HITCH, LOWER LIFT LINKS
35.120.05		HITCH, STABILIZER & BRACKET
35.120.06		HITCH, TOP LINK BRACKET

TABLE OF CONTENTS

35.162.01		HYDRAULIC TOP LINK ASSEMBLY- BALL & CLAW
35.204.01		REMOTE HYDRAULIC CONTROL VALVE
35.204.02		VALVE ASSEMBLY, HITCH
35.204.03		VALVE ASSEMBLY, TRAILER BRAKE
35.204.04		VALVE ASSEMBLY, LIFT LINK
35.204.20		HYDRAULIC POWER BEYOND, MOTOR RETURN VALVE
35.204.23		HYDRAULIC SYSTEM REMOTE COUPLERS
35.204.24		REMOTE HYDRAULIC COUPLING MOUNTING
35.204.25		REMOTE HYDRAULIC COUPLINGS
35.204.26	01	REMOTE HYDRAULIC VALVE 4 STACK
35.204.26	02	REMOTE HYDRAULIC VALVE 5 STACK
35.204.26	03	REMOTE HYDRAULIC VALVE 6 STACK
35.300.01		HYDRAULIC SYSTEM, OIL COOLER WITH POWERSHIFT TRANSMISSION
35.304.01		HYDRAULIC SYSTEM, PISTON PUMP & FILTER, STANDARD & HIGH FLOW CAPACITY
35.304.02	01	HYDRAULIC SYSTEM, PISTON PUMP & FILTER, TWIN MEGA FLOW CAPACITY
35.304.02	02	HYDRAULIC SYSTEM, PISTON PUMP & FILTER, TWIN MEGA FLOW CAPACITY
35.310.01		PLATE ASSEMBLY, VALVE MOUNTING, LEFT HAND SIDE
35.310.02		PLATE ASSEMBLY, VALVE MOUNTING, TOP
35.310.09		MANIFOLD VALVE ASSEMBLY
35.350.01	01	HYDRAULIC SYSTEM, REGULATED PRESSURE
35.350.01	02	HYDRAULIC SYSTEM, REGULATED PRESSURE
35.700.01		HYDRAULIC SYSTEM, COUPLER SPILLAGE
37.120.01	02	HITCH, LIFT LINK ASSEMBLY
37.120.04	01	HITCH, TOP LINK BALL END
37.120.04	02	HITCH, TOP LINK BALL END
37.100.01		DRAWBAR & HAMMERSTRAP, STANDARD
37.100.12		DRAWBAR & HAMMERSTRAP, HIGH CAPACITY, CAT III
37.100.13		DRAWBAR & HAMMERSTRAP, HIGH CAPACITY, CAT IV
37.120.02		HITCH LINKAGE ASSY, HYDRAULIC LIFT
37.120.03		HITCH LINKAGE ASSY, TURNBUCKLE LIFT
37.140.01		FRONT WEIGHTS
37.140.15		REAR WHEEL WEIGHTS
37.166.01		LIFT HOOK ASSY, FRONT HITCH
39.100.01		FRONT FRAME, STANDARD & SUSPENDED AXLE
39.100.02		FRONT FRAME, CLASS V, SUSPENDED AXLE-T8.330,T8.360,T8.390
39.110.02		HITCH, SWAY LIMITER
39.110.03		HITCH, SWAY LIMITER
39.110.04		QUICK HITCH COUPLER, CONVERTIBLE, CATEGORY III/III-N
39.110.05		QUICK HITCH COUPLER, CONVERTIBLE, CATEGORY III / IV-N
39.110.06		HITCH, DRAFT CONTROL PINS
39.110.07		FPTO AND FRT HITCH READY - HYD
41.200.02	01	STEERING SYSTEM, MFD WITH AUTOGUIDANCE
41.200.02	02	STEERING SYSTEM, MFD WITH AUTOGUIDANCE
41.200.03	01	STEERING SYSTEM, MFD-T8.275,T8.300,T8.330,T8.360
41.200.03	02	STEERING SYSTEM, MFD-T8.275,T8.300,T8.330,T8.360
41.200.04		STEERING SYSTEM, CLASS 4.5 AXLE, STANDARD MFD-T8.275,T8.300
41.200.05		STEERING SYSTEM, CLASS V AXLE, STANDARD & SUSPENDED, MFD-T8.330, T8.360,T8.390
41.200.08		PRIORITY & REGULATOR VALVE ASSEMBLY - BSN ZBRD07104
41.200.08		PRIORITY & REGULATOR VALVE ASSY - ASN ZBRD07105

TABLE OF CONTENTS

41.200.09	01	PRIORITY & REGULATOR PWM VALVE ASSEMBLY, T8.360, AND T8.390
41.200.09	02	PRIORITY & REGULATOR PWM VALVE ASSEMBLY, T8.360 AND T8.390
41.204.01		STEERING WHEEL & COLUMN
41.204.02		STEERING COLUMN ASSEMBLY
41.216.02		STEERING CYLINDER ASSEMBLY, CLASS 4.5 AXLE, BREAKDOWN-T8.275, T8.300
41.216.03		STEERING CYLINDER ASSEMBLY, MFD, 12 BOLT HUB-T8.275,T8.300,T8.330,T8.360
44.100.02		HUB ASSEMBLY, REAR WHEEL
44.101.01		SPACERS - DUAL FRONT WHEELS 12FRT/16FRT
44.511.02	01	FRONT WHEEL ASSY, MFD, 12 BOLT
44.520.01		SOLID STEEL REAR WHEELS
44.520.02		SPACER, DUAL REAR WHEELS
50.200.01		COMPRESSOR, AIRCOND. (504383046)
50.200.08	01	AIR CONDITIONING, CONDENSOR
50.200.08	02	AIR CONDITIONING, COMPRESSOR
50.200.10		AIR CONDITIONING, AIR FILTER
50.206.01		AIR CONDITIONING, CLIMATE CONTROL WITH AUTO TEMPERATURE CONTROL
50.206.06		AIR CONDITIONING, DUCTS
55.100.01	01	HARNESS ENGINE ASSY
55.100.01	02	HARNESS ENGINE
55.100.02	01	HARNESS CHASSIS ASSY, POWERSHIFT TRANSMISSION
55.100.02	02	HARNESS CHASSIS
55.100.02	03	HARNESS, CHASSIS
55.100.02	04	HARNESS, CHASSIS
55.100.03		HARNESS, 12 BOLT, SUSPENDED MFD AXLE-T8.275,T8.300,T8.330,T8.360
55.100.04		HARNESS, CLASS V, SUSPENDED MFD AXLE-T8.330,T8.360,T8.390
55.100.05		MOTOR ELECTRIC INSTALLATION (504385996)
55.100.05		HARNESS, HEADLAMPS
55.100.06		HARNESS, ROOF
55.100.07	01	HARNESS CAB
55.100.07	02	HARNESS CAB
55.100.07	03	HARNESS, CAB
55.100.08		HARNESS, PARK BRAKE SWITCH
55.100.12		HARNESS, GPS ANTENNA
55.100.13		HARNESS, AUXILLARY
55.100.14		HARNESS, TERMINATOR
55.100.15		HARNESS, FRONT PTO
55.100.16		HARNESS, FRONT HITCH
55.100.17		HARNESS, ISO 11783 OUTSIDE
55.100.19	01	HARNESS, ARMREST - WITH MOTOR
55.100.19	02	HARNESS, ARMREST - WITHOUT MOTOR
55.100.20		HARNESS, ARMREST ELECTRIC ADJUST
55.100.21		HARNESS, EGRESS LIGHTING
55.100.24		ELECTRICAL COMPONENT MOUNTING
55.100.25		ELECTRICAL COMPONENT MOUNTING, FUSES
55.100.32		IMPLEMENT CONNECTORS & MOUNTING
55.100.40		FUSE BOX, POWER DISTRIBUTION
55.100.41		HARNESS, AUTOGUIDANCE OUTSIDE
55.201.01		STARTER MOTOR (504357252)
55.301.01		ENGINE, ALTERNATOR MOUNTING (504383238)
55.301.02		BATTERY, BATTERY BOX & CABLES
55.301.03		BATTERY, DISCONNECT SWITCH

TABLE OF CONTENTS

55.301.04		ALTERNATOR
55.404.01		HEADLAMPS
55.404.02		WORK LAMPS, ROOF
55.404.03		WORK LAMPS, REAR FENDERS
55.404.04		SIGNAL LAMPS, ROOF
55.404.05		C-POST, ROOF LIGHTS
55.404.06		A-POST, WORK LIGHTS, LEFT HAND
55.404.07		A-POST, WORK LIGHTS, RIGHT HAND
55.404.08		LAMPS, REAR FENDER AND REMOTE HITCH SWITCH
55.404.15	01	LAMPS, WIDE TRANSPORT, ADJUSTABLE
55.408.02		HORN
55.414.01		MOTOR SENSORS (504226073 - 504270473)
55.418.01		RADAR, MOUNTING
55.418.02		A-POST COVER, INSTRUMENT CLUSTER
55.424.01		HITCH, POSITION SENSOR
55.440.01		ELECTRONIC INJECTION (504305399)
55.440.04		PEDAL, INCHING
55.440.06		GPS RECIEVER & MOUNTING
55.510.01		POWER OUTLETS, CAB
55.512.01		CONTROLS, FRONT CONSOLE
55.512.02		CONTROLS, RIGHT FENDER CONSOLE
55.512.04		RADIOS, SPEAKERS & ANTENNAS
55.512.05	01	ARMREST CONTROL UNIT, ELECTRONIC CONTROLS
55.512.05	02	ARMREST CONTROL UNIT, ELECTRONIC CONTROLS
55.512.05	03	ARMREST CONTROLS
55.512.05	04	ARMREST CONTROL UNIT, CUSHION
55.512.05	05	ARMREST CONTROL UNIT, SLIDE MECHANISM
55.512.05	06	ELECTRIC ARMREST CONTROL 4WD
55.512.05	07	DIA KIT, JOYSTICK
55.514.01		LAMP, BEACON - SINGLE/DUAL
55.518.01		WINDSHIELD WIPER ASSEMBLY, FRONT & REAR
55.518.04		WINDSHIELD WASHER
55.518.05		RIGHT HAND WINDOW WIPER
55.640.02		TRANSMISSION, ELECTRONIC CONTROL UNITS
55.640.03		24V CONVERTER & MOUNT
55.640.11		AUTOGUIDANCE CONTROL MODULE & MOUNTING
55.785.04		COLOR DISPLAY - LARGE , MOUNTING
88.010.01		DIA KIT, AUXILLARY FUEL FILTER
88.031.01		DIA KIT, FRONT HITCH HYDRAULIC PLUMBING
88.031.02		DIA KIT, FRONT PTO COMPLETING-NA
88.031.03		DIA KIT, FRONT PTO COMPLETING-EUR
88.031.04		DIA KIT, HYDRAULIC FRONT AXLE SCISSOR SUSP
88.031.05		DIA KIT, HYDRAULIC FRONT AXLE SADDLE SUSP
88.031.06		DIA KIT, FRONT HITCH ONLY, STANDARD AXLE
88.031.07		DIA KIT, FRONT HITCH ONLY, SCISSOR SUSPENDED AXLE
88.031.08		DIA KIT, FRONT HITCH ONLY, SADDLE SUSPENDED AXLE
88.033.01	01	DIA KIT, NON-EEC AIR TRAILER BRAKE
88.033.01	02	DIA KIT, NON-EEC AIR TRAILER BRAKE
88.033.01	03	DIA KIT, NON-EEC AIR TRAILER BRAKE
88.033.01	04	DIA KIT, NON-EEC AIR TRAILER BRAKE
88.033.02		DIA KIT, EEC HYDRAULIC TRAILER BRAKE

TABLE OF CONTENTS

88.033.03		DIA KIT, HYDRAULIC TRAILER BRAKE, ITALY
88.035.01	01	DIA KIT, HITCH READY COMPLETION, CAT III
88.035.01	02	DIA KIT, HITCH READY COMPLETION, CAT III
88.035.02	01	DIA KIT, HITCH READY COMPLETION, CAT IV
88.035.02	02	DIA KIT, HITCH READY COMPLETION, CAT IV
88.035.03		DIA KIT, HYDRAULIC 5TH REMOTE
88.035.04		DIA KIT, HYDRAULIC MOTOR RETURN WITH CASE DRAIN
88.035.05		DIA KIT, HYDRAULIC POWER BEYOND, MOTOR RETURN VALVE
88.035.06		DIA KIT, MEGA-TWIN FLOW
88.035.07		DIA KIT, HYDRAULIC 6TH REMOTE
88.037.01		DIA KIT, FRONT WEIGHTS, 12 X 40KG
88.037.02		DIA KIT, FRONT WEIGHTS, 22 X 40KG
88.037.03		DIA KIT, FRONT WEIGHTS, 10 X 100KG
88.037.04		DIA KIT, FRONT WEIGHTS, 16 X 100KG
88.037.05		DIA KIT, REAR WHEEL WEIGHTS, 1 PAIR 200LB/91KG
88.037.06		DIA KIT, REAR WHEEL WEIGHTS, 1 PAIR 500LB/227KG
88.037.07		DIA KIT, REARWHEEL WEIGHT, 2 X 1000 LB
88.039.01		DIA KIT, FRONT 3PT WEIGHT BRACKET CARRIER
88.055.01		DIA KIT, JOYSTICK
88.055.02		DIA KIT, ISO BUS 11783
88.055.03		DIA KIT, HID
88.055.04		DIA KIT, LEFT HAND BEACON LIGHT
88.055.05		DIA KIT, DUAL BEACON LIGHTS
88.055.06		DIA KIT, REAR HID LIGHT
88.055.07		DIA KIT, BUSINESS BAND RADIO ANTENNA CABLE
88.055.08		DIA KIT, AM/FM/WB RADIO
88.055.09		DIA KIT, AM/FM/WB/CASS RADIO
88.055.10		DIA KIT, AM/FM/WB/CD/CASS RADIO
88.055.11		DIA KIT, FRONT HITCH HEADLAMPS, RIGHT HAND DIP
88.055.12		DIA KIT, FRONT HITCH HEADLAMPS, LEFT HAND DIP
88.055.13		DIA KIT, IMPLEMENTCONNECTOR
88.090.01		DIA KIT, FRONT FENDER, NARROW - DANA 10/12 HD BOLT
88.090.02		DIA KIT, FRONT FENDER, NARROW - DANA CLASS 5
88.090.03		DIA KIT, FRONT FENDER, NARROW - DANA CLASS 4, 4.5
88.090.04		DIA KIT, FRONT FENDER, WIDE - DANA 10/12 HD BOLT
88.090.05		DIA KIT, FRONT FENDER, WIDE - DANA CLASS 5
88.090.06		DIA KIT, FRONT FENDER, WIDE - DANA CLASS 4, 4.5
88.090.07		DIA KIT, MANUAL WIDE ADJUSTABLE MIRRORS
88.090.08		DIA KIT, REMOTE WIDE ADJUSTABLE MIRROR
88.090.09		DIA KIT, OVERWIDTH WARNING
88.090.10		DIA KIT, OVERWIDTH WARNING, ITALY
88.090.12		KIT HIGH DEBRIS INTAKE GRILLE
90.100.01	01	HOOD ASSY, FIXED
90.100.01	02	HOOD ASSY, FIXED
90.100.02	01	HOOD, TILTING
90.100.02	02	HOOD, TILTING
90.100.02	03	HOOD, TILTING
90.108.01		DECALS, HOOD & CAB
90.108.02		DECALS
90.108.03		DECALS
90.108.04		DECALS

TABLE OF CONTENTS

90.108.05		DECALS
90.108.06		DECALS SPANISH
90.108.07		DECALS FRENCH CANADA
90.116.01		FENDERS, FRONT, AXLE MOUNTED, DYNAMIC
90.116.02	01	FENDERS - REAR, NARROW
90.116.02	02	FENDERS - REAR, WIDE
90.118.01		MIRRORS
90.118.05		CAB, STEPS
90.118.06		CAB, FRONT WINDOW STEP
90.120.07		SEAT, INSTRUCTIONAL
90.124.01	01	SEAT ASSEMBLY BSN ZBRC01349
90.124.01	02	SEAT ASSEMBLY ASN ZBRC01349
90.124.02	01	CUSHION ASSEMBLY, SEAT BSN ZBRC01349
90.124.02	02	CUSHION ASSEMBLY, SEAT ASN ZBRC01349
90.124.03	01	SUSPENSION ASSEMBLY WITHOUT POSITIVE RESPONSE, SEAT BSN ZBRC01349
90.124.03	02	SUSPENSION ASSEMBLY WITHOUT POSITIVE RESPONSE, SEAT ASN ZBRC01349
90.124.04	01	SUSPENSION ASSEMBLY WITH POSITIVE RESPONSE, SEAT BSN ZBRC01349
90.124.04	02	SUSPENSION ASSEMBLY WITH POSITIVE RESPONSE, SEAT ASN ZBRC01349
90.150.01		ISO CAB MOUNTS
90.150.02		TOOL BOX & MOUNTING
90.150.03		CAB, SERVICE
90.150.04	01	CAB, SUSPENSION
90.150.04	02	CAB, SUSPENSION
90.150.05		CAB, ROOF
90.154.01	01	CAB, DOOR
90.154.01	02	CAB, DOOR
90.156.01		CAB, FIXED GLASS
90.156.03		CAB, REAR WINDOW
90.160.01		CAB, INSTRUMENT PANEL
90.160.02		CAB INTERIOR TRIM - POSTS
90.160.03		CAB, HEADLINER, DELUXE & LUXURY TRIM
90.160.06		CAB, FLOOR MAT & INSULATION
90.160.10		CAB, EXTERIOR TRIM
90.160.11		CAB, TRIM, FENDERS
90.160.13		CAB, INSULATION

ALPHABETICAL INDEX	FIGURE	SEQ.
PICTORIAL INDEX - MAINTENANCE	00.000.00	
PICTORIAL INDEX - ENGINE (504376884)	00.000.10	01
PICTORIAL INDEX - ENGINE (504376884)	00.000.10	02
PICTORIAL INDEX - LIVE PTO	00.000.14	
PICTORIAL INDEX - TRANSMISSION	00.000.21	
PICTORIAL INDEX - 4WD LINES	00.000.23	
PICTORIAL INDEX - FRONT MECHANICAL DRIVE	00.000.25	
PICTORIAL INDEX - REAR DRIVE AXLE	00.000.27	
PICTORIAL INDEX - IMPLEMENT POWER TAKE-OFF	00.000.31	
PICTORIAL INDEX - BRAKES & CONTROLS	00.000.33	
PICTORIAL INDEX - HYDRAULIC SYSTEMS	00.000.35	
PICTORIAL INDEX - TOWING HOOKS & BALLASTING	00.000.37	
PICTORIAL INDEX - FRAMES	00.000.39	
PICTORIAL INDEX - STEERING	00.000.41	
PICTORIAL INDEX - AXLE & WHEELS	00.000.44	
PICTORIAL INDEX - CAB CLIMATE CONTROL	00.000.50	
PICTORIAL INDEX - ELECTRICAL SYSTEMS	00.000.55	
PICTORIAL INDEX - ACCESSORIES	00.000.88	
PICTORIAL INDEX - PLATFORM, CAB, BODYWORK AND DECALS	00.000.90	
INITIAL STOCKING LIST (ISL) FOR N.A. ONLY	00.100.01	
FILTERS AND CAPACITIES	05.100.01	
FILTERS & CAPACITIES	05.100.01	
ENGINE T4	10.001.01	01
ENGINE T2	10.001.01	02
CYLINDER BLOCK & RELATED PARTS (504292416 - 504311100 - 504248099)	10.001.02	
ENGINE, MOUNTING	10.012.02	
HOOKS - ENGINE (504363395)	10.012.04	
CYLINDER HEAD & RELATED PARTS (5801378194 - 504029659 - 5801379857 - 504320756 - 504223088)	10.101.01	
HEAD COVER	10.101.02	
ENGINE BREATHERS (504334914)	10.101.03	
OIL SUMP & RELATED PARTS (504332983)	10.102.01	
FLYWHEEL CASE (504356968 - 504134507)	10.102.02	
OIL LEVEL CHECK (504376868 - 504376865 - 5801411691 - 5801440482)	10.102.03	
ENGINE OIL DRAIN	10.102.04	
CRANKSHAFT & RELATED PARTS (504385236)	10.103.01	
FLYWHEEL (504338269)	10.103.02	
DAMPER, PST SHAFT & SHIELD - T8.360, T8.390	10.103.03	
DAMPER, PST SHAFT & SHIELD - T8.275, T8.300, T8.330	10.103.03	
DAMPER - PULLEY (504220573 - 504363515 - 504323018)	10.103.04	01
DAMPER, CVT SHAFT & SHIELD - T8.360, T8.390	10.103.05	
DAMPER, CVT SHAFT & SHIELD, T8.275, T8.300, T8.330	10.103.05	
PISTON - ENGINE	10.105.01	
CONNECTING ROD	10.105.02	
CAMSHAFT (504339814)	10.106.01	
SHAFT & ROCKER ARMS (504189152 - 504312664)	10.106.02	
PULLEY - CRANHSHAFT (504248440)	10.106.05	
BELT PULLEY DRIVE & COVER (504150293)	10.114.01	
ENGINE EXHAUST BRAKE (504329098)	10.120.01	
AIR INTAKE	10.202.01	01
AIR INTAKE	10.202.01	02
DUCT, DIRTY AIR ASSEMBLY	10.202.02	
AIR CLEANER ASSEMBLY	10.202.03	
FUEL FILTER & RELATED PARTS (504363526 - 504363525)	10.206.01	
ENGINE OIL FILTER ASSY	10.206.02	

FUEL SEPARATOR FILTER	10.206.03	
FUEL LINES WITH SEPARATOR FILTER	10.206.04	
FUEL FILTER WITH WIF SENSOR	10.206.05	
FUEL PUMP/FILTER PLUMBING	10.214.01	
FUEL TANK & ASSOCIATED PARTS POWERSHIFT TRANSMISSION, T4	10.216.01	
FUEL TANKS & MOUNTING, T2 WITH POWERSHIFT TRANSMISSION	10.216.02	
FUEL TANK SUPPORTS WITH POWERSHIFT TRANSMISSION	10.216.03	01
FUEL TANK SUPPORTS WITH PST	10.216.03	02
FUEL TANK SUPPORTS WITH CVT	10.216.04	
FUEL TANKS & MOUNTING T4 WITH CVT	10.216.05	
FUEL TANKS & MOUNTING, T2 WITH CVT	10.216.06	
FUEL INJECTORS (504319990)	10.218.02	
FUEL LINES & RELATED PARTS (504305623)	10.218.03	
FUEL LINES & RELATED PARTS (504363514)	10.218.04	
FOOT THROTTLE	10.220.01	
EXHAUST BRAKE PEDAL & SWITCH	10.220.02	
INJECTION PUMP	10.247.01	01
INJECTION PUMP (504305623)	10.247.01	
TURBOCHARGER & RELATED PARTS (504382715)	10.250.02	
AIR LINES (504236499)	10.254.01	
ENGINE BLOCK & TRANSMISSION HEATERS	10.254.02	
EXHAUST SYSTEM, T4	10.254.03	02
EXHAUST SYSTEM, T2	10.254.03	03
EXHAUST SYSTEM T4	10.254.03	01
AIR INLET HEATER (504329100)	10.254.04	
EXHAUST MANIFOLD (504380218)	10.254.05	
SCR TANK ASSEMBLY	10.254.06	01
SCR HOSE ASSEMBLY & COMPONENTS	10.254.06	02
GRID HEATER CABLES	10.254.07	
PUMP, ENGINE OIL & RELATED PARTS (504133121)	10.304.01	
OIL PUMP PIPING (504332973)	10.304.03	01
OIL PUMP PIPING (504385686)	10.304.03	03
OIL PUMP PIPING (5801372649)	10.304.03	02
OIL PRESSURE REGULATION VALVE (504191874)	10.304.05	
AFTERCOOLER	10.310.01	
WATER PUMP PIPES, ENGINE WITH BRAKE (504382682 - 504322623 - 504387190 - 5801422773)	10.402.01	01
WATER PUMP PIPES, ENGINE WITHOUT BRAKE (504382682 - 504322623 - 504387190 - 504153553)	10.402.01	02
PIPING - ENGINE COOLING SYSTEM (504032238 - 504032236 - 504088291 - 504051325)	10.402.01	03
TEMPERATURE CONTROL (THERMOSTAT) - (504292843 - 504072032)	10.402.01	04
WATER PUMP & RELATED PARTS (504361542)	10.402.02	
RADIATOR & FAN SHROUD - 4-ROW	10.406.01	01
RADIATOR & FAN SHROUD - 4-ROW	10.406.01	02
RADIATOR ASSEMBLY - 5-ROW	10.406.02	01
RADIATOR MOUNTING AND PLUMBING - 5-ROW	10.406.02	03
RADIATOR MOUNTING AND PLUMBING - 5-ROW	10.406.02	02
HEAT EXCHANGER (504339248)	10.408.01	
VISCOUS FAN DRIVE, ELECTRONIC	10.414.01	
SUPPORT ASSY, VISCOUS FAN DRIVE	10.414.02	
POWER TAKE OFF ASSEMBLY, INPUT SHAFT	14.102.04	
POWER TAKE OFF ASSEMBLY, REDUCTION GEAR, DUAL SPEED	14.102.05	
POWER TAKE OFF ASSEMBLY, OUTPUT SHAFT, DUAL SPEED	14.102.06	
POWER TAKE OFF ASSEMBLY, OUTPUT SHAFT, SINGLE SPEED	14.102.07	
TRANSMISSION HYDR LINES POWERSHIFT	21.105.01	02
TRANSMISSION HYDRAULIC LUBE LINES - POWERSHIFT	21.105.01	02
TRANSMISSION HYDRAULIC LUBE LINES - POWERSHIFT	21.105.01	01

SPEED TRANSMISSION, HOUSING	21.114.01	
TRANSMISSION CONTROL ASSEMBLY	21.135.01	
VALVE ASSEMBLY, INCHING	21.135.04	
TRANSMISSION CONTROL VALVE LOCATION	21.135.05	
VALVE ASSEMBLY, TRANSMISSION CONTROL (450729A2)	21.135.06	
VALVE ASSEMBLY, TRANSMISSION CONTROL (450724A2)	21.135.07	
VALVE ASSEMBLY, TRANSMISSION CONTROL (450728A2)	21.135.08	
VALVE ASSEMBLY, TRANSMISSION CONTROL (87323842)	21.135.09	
SPEED TRANSMISSION, INPUT SHAFT WITHOUT CREEP OR 19 SPEED	21.140.11	
SPEED TRANSMISSION, INPUT SHAFT WITH CREEP/19 SPEED OR 50 KPH TRANSMISSION	21.140.12	
RANGE TRANSMISSION, INPUT SHAFT	21.140.13	
SPEED TRANSMISSION, COUNTERSHAFT WITHOUT CREEP OR 19 SPEED	21.154.01	
SPEED TRANSMISSION, COUNTERSHAFT WITH CREEP/19 SPEED OR 50 KPH TRANSMISSION	21.154.02	
SPEED TRANSMISSION, OUTPUT SHAFT FRONT CLUTCH	21.154.03	
SPEED TRANSMISSION, OUTPUT SHAFT REAR CLUTCH	21.154.04	
RANGE TRANSMISSION, HOUSING	21.154.05	
RANGE TRANSMISSION - DANA CLASS V MFD CLUTCH AND PARK BRAKE	21.155.01	02
RANGE TRANSMISSION - CLASS 4.5 MFD CLUTCH AND PARK BRAKE	21.155.01	04
RANGE TRANSMISSION - DANA 12 BOLT MFD CLUTCH AND PARK BRAKE	21.155.01	03
RANGE TRANSMISSION - MFD CLUTCH AND PARK BRAKE	21.155.01	01
RANGE TRANSMISSION, MASTER CLUTCH	21.155.03	
RANGE TRANSMISSION, COUNTERSHAFT	21.155.30	
TRANSMISSION DROP BOX	21.155.31	01
TRANSMISSION DROP BOX	21.155.31	02
FRONT AXLE DRIVESHAFT, MFD, WITHOUT DIFFERENTIAL LOCK-T8.275,T8.300,T8.330,T8.360	23.101.01	01
FRONT AXLE DRIVE SHAFT, MFD, WITH DIFFERENTIAL LOCK-T8.275,T8.300,T8.330,T8.360	23.101.01	02
FRONT AXLE DRIVE SHAFT, MFD, CLASS 4.5 AXLE-T8.275,T8.300	23.101.02	
SHAFT ASSY, USED WITH 12 BOLT	23.101.03	
SHAFT ASSY, MFD 6C - PST & CVT	23.101.04	
HYDRAULIC SYSTEM, 12 BOLT, SUSPENDED MFD AXLE-T8.275,T8.300,T8.330,T8.360	23.202.02	02
HYDRAULIC SYSTEM, 12 BOLT, SUSPENDED MFD AXLE-T8.275,T8.300,T8.330,T8.360	23.202.02	01
HYDRAULIC SYSTEM, CLASS V, SUSPENDED MFD AXLE-MAGNUM T8.330,T8.360,T8.390	23.202.04	01
HYDRAULIC SYSTEM, CLASS V, SUSPENDED MFD AXLE-MAGNUM T8.330,T8.360,T8.390	23.202.04	03
HYDRAULIC SYSTEM, CLASS V, SUSPENDED MFD AXLE-MAGNUM T8.330,T8.360,T8.390	23.202.04	02
VALVE ASSEMBLY, SUSPENDED AXLE CONTROL	23.202.05	
MFD AXLE HOUSING ASSEMBLY, STANDARD 12 BOLT, WITH DIFFERENTIAL LOCK-T8.275,T8.300,T8.330,T8.360	25.100.01	02
MFD AXLE HOUSING ASSEMBLY, STANDARD WITH 12 BOLT HUB, WITHOUT DIFFERENTIAL LOCK-T8.275,T8.300,T8.330,T8.360	25.100.01	01
FRONT AXLE ASSEMBLY, CLASS 4.5, STANDARD MFD-T8.275,T8.300	25.100.02	01
FRONT AXLE ASSEMBLY, CLASS 4.5, STANDARD MFD-T8.275,T8.300	25.100.02	02
FRONT AXLE ASSEMBLY, CLASS V, STANDARD AND SUSPENDED MFD-T8.330,T8.360,T8.390	25.100.03	01
FRONT AXLE ASSEMBLY, CLASS V, STANDARD AND SUSPENDED MFD-T8.330,T8.360,T8.390	25.100.03	02

**Thanks very much for your reading,
Want to get more information,
Please click here, Then get the complete
manual**

JustClickHere 

NOTE:

**If there is no response to click on the link above,
please download the PDF document first, and then
click on it.**

**Have any questions please write to me:
admin@servicemanualperfect.com**